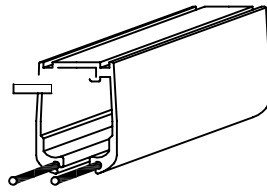
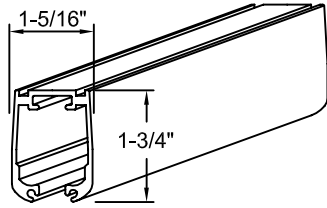


TRACK

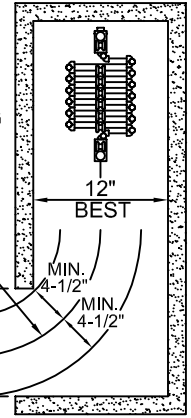


POCKET

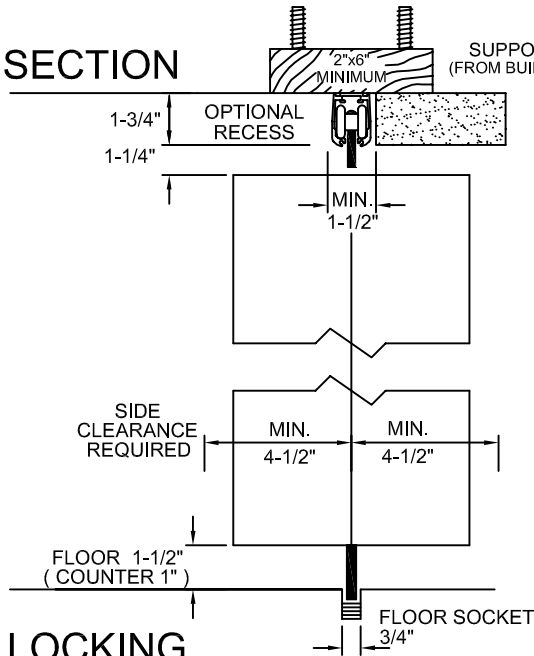
MINIMUM STACKING
1.05" PER FOOT OF OPENING
PLUS 3.5" PER POST
OR ROUGHLY
2" PER FOOT OF OPENING

14" RADIUS CURVE

TRACK



SECTION

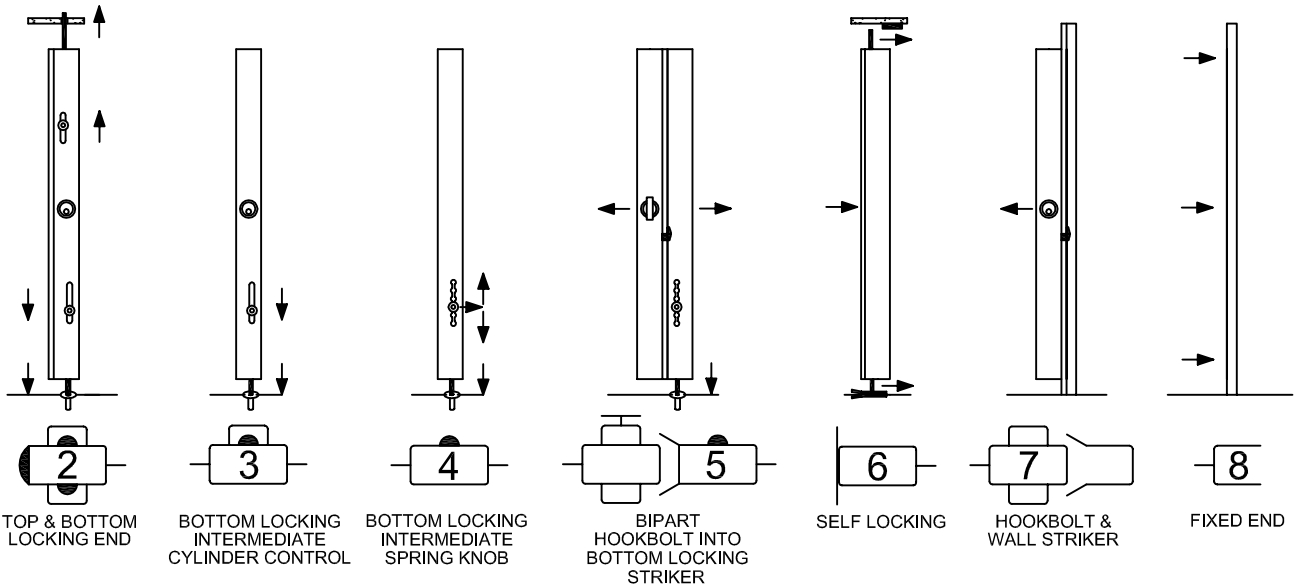


SUPPORT BY OTHERS
(FROM BUILDING STRUCTURE)

MODEL	WEIGHT IN LBS./SQ.FT.
AS100CA - GLASS VISTA	2.5
AS200CA - LEXAN VISTA	2.25
AS300CA - AIR VISTA	2.2
AS300 / AS100CA - AIR/GLASS VISTA	2.5
AS400CA - PERFORATED VISTA	2.0
AS500CA - SOLID VISTA	2.25
AS600CA - CLASSIC 126	0.8
AS700CA - GUARDIAN	1.5
ASXXXCA - SENTRY	1.5

LOCKING

THE GRILLE SUPPORT SHOULD BE DESIGNED TO CARRY THE WEIGHT OF A FULLY STACKED DOOR AT ANY POINT ALONG IT'S LENGTH.



SAMPLE LAYOUTS

